

# For best results



We recommend a well balanced soy/grain-free diet



## Tip: Introducing the Joint Support tablet for the first time?

Some pets are afraid of new food items such as this tablet. It is helpful to break it into smaller pieces the first time you feed it and even try mixing it with a favorite treat or leaving it in their nighttime home to explore it on their own overnight. Over 95% of pets learn to love and beg for this tablet!

## How Many Tablets Does Your Pet Need Daily?

**Therapeutic Support**  
For pets with an obvious need for joint support  
**1 tablet per pound of body weight daily**

**Maintenance or Prevention**  
**1/2 tablet per pound of body weight daily**

**Active Ingredients:** Carrot, Banana, Glucosamine, Chondroitin Sulfate, Methsulfonylemethane (MSM), Curcumin (Turmeric extract), L-Ascorbic acid (Vitamin C), Magnesium Stearate

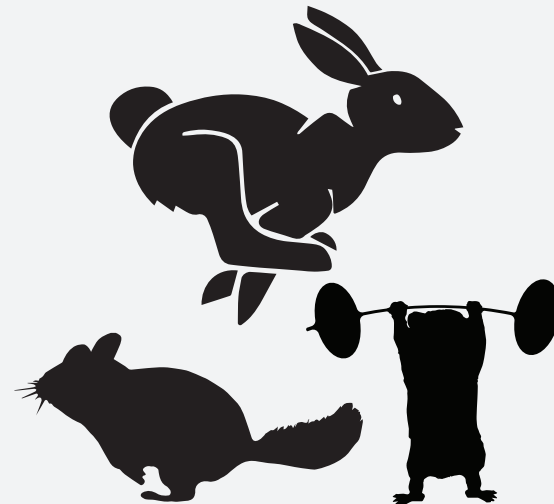
**Inactive Ingredient:** Cellulose

\*Example for a 4 pound rabbit

**Mild**  
\*2 tablets/day

**Therapeutic**  
\*4 tablets/day

Joint health and overall health and well-being are closely related to each other. If one declines then the other will decline too.



Encourage your pet to exercise and eat right!



### Feeding Directions

For a therapeutic effect feed 1 tablet per pound of body weight in a single feeding once a day.

Use half the dose for maintenance.

[sherwoodpethealth.com](http://sherwoodpethealth.com)



## Arthritic giant rabbit no longer on meds

Posted by Eileen Walsh

Our 7-year old, 10-lb Checkered Giant started showing signs of discomfort this past year. He would lose his balance while running and his back legs would not cooperate with the rest of his body. X-rays confirmed arthritis and some lower back problems. He was prescribed medicam (as needed) but we wanted to try a more holistic approach. These tablets worked wonders. Even our vet agreed. His gait was much better and he is much more stable when he runs. He's not showing any signs of pain. And he loves the tablets. We started him on the full dose for his size and now we give him 1/2 for "maintenance". They definitely work.



## Extra hop in his hop

Posted by Lorelei

Peter is a senior bun at age 10. He has some stiff joints now that he's older. He's been on this supplement I'd say a year now & every-time we give it to him, he zooms around for a little bit so it definitely is helping loosen up his joints!



## Active bunny once again!

Posted by Gizmo

The joint support tablets were definitely a treat for Gizmo. As a senior bunny of 8.5 years, I had purchased the joint support to increase her mobility. I have a set of pet stairs to the bed that she just refused to move up and down from, but had shown that she wanted to come up to the bed with me. I had suspected it may have been difficult for her maneuver comfortably. After giving these supplements to her, I'd say within 2 weeks that she was much more mobile and adamant to move. I'm glad these tablets have helped her!



## It's a Treat!

Posted by Kimberly Wheatfill, Director Friends of Unwanted Rabbits

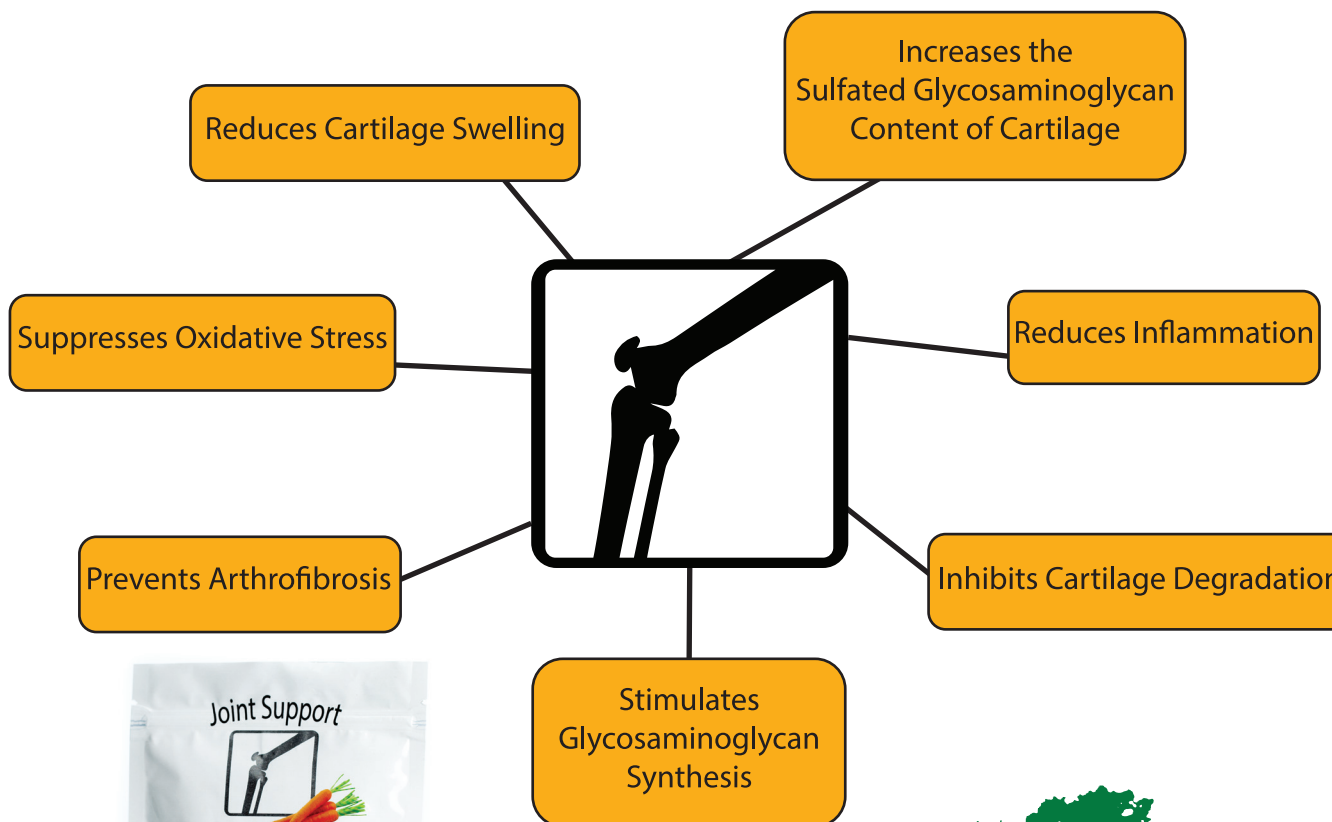
Joint Support is a true treat for my older rabbits. They all get really excited when they get their "treat". It gives me piece of mind knowing I'm giving them what their body needs. My Flemish Giant Tigger was having a hard time cleaning his hind feet. Since being on Joint Support he is able to keep his back feet clean.



## My Older bunny binkies again

Posted by GSP

I bought this supplement for my older bunny, who has slowed down a bit in his older age, and also as a treat/supplement for my other two younger ones. All my Bunnies love them! After a few weeks I noticed my older bun Navi now sprints around and binkies like a young bunny. My bunnies have free roam of my bunny safe/proof home, and to see him respond so well to this tablet has been a blessing. This is the best supplement. I also give them a daily tablet of digestives..another must have from Sherwood Pet. I am so happy to have found this product



Read more about our active ingredients at:

[sherwoodpethealth.com/supplements/#-joint-support](https://sherwoodpethealth.com/supplements/#-joint-support)

